

E L I T E W A R E H O U S E S Y S T E M S



MAQ BUILDERS

& DEVELOPERS

ELITE WAREHOUSE SYSTEMS



WHAT IS ELITE WAREHOUSE SYSTEMS?

MAQ Builders and Developers are proud to announce Elite Warehouse Systems. The project is setting a spectacular industrial solution which is being planned with all of the distinctive and state-of-the-art industrial amenities so it will be pakistani's first and finest Warehouse system which is sindh Building Control Authority (SBCA) approved project . Following are the keys pecifications of the Elite Warehouse Systems.

IDEAL LANDMARK :

The whereabouts are accessible and desirable as it is just 20 minutes away from Karachi Port & strategically situated at M-10 motorway leading towards mochko Hub and starting point of CPEC that linked the center way towards Gawadar, Quetta & Punjab.

STRONG STRUCTURE :

The lightweight RCC & imported steel-framed structure on deep pile foundation, block, masonry, plastered with cement mortar.

QUALITY SPACES :

The project is expanding over eight acres of land providing broad and spacious 60ft. road with a total number of 28 warehouses and each warehouse has dedicated office space.

GATED COMMUNITY :

The project is surrounded with boundary wall with a full-fledged round-the-clock security system with 24/7 CCTV surveillance and fire extinguishing system that ensures the high standards of security in protecting the stock and investment system.

ONE TOUCH SMART APP :

The project has featured palm application that provide the one-touch solution in the ever-expanding online payment processing market, stand by security alert and virtual warehouse accessibility.

GURANTEED DURABILITY :

The project guarantees no major repairs for decades and hence reduces repair-related cost drastically



KEY FEATURES

The project is based on total number of 28 warehouses and each warehouse has total size of 50x170 with complete state-of-the-art facilities for the first time in Pakistan which brings vibrancy to entire project which ensures vast industrial as well as e-commerce solutions. Following are the outstanding features of the project;



Broad & Spacious



Gated Community



Office Suites



Mosque



Fire Fighting System



Security Alarm System



BROAD & SPACIOUS



The project is designed with state-of-the-art planning that strategically provides hassle-free loading and unloading amenity for shipments and offers dynamic ways for factory vehicles to access the warehouse with ease.

GATED COMMUNITY

The eight acres of project land is surrounded with a boundary wall along with the main entrance & exit ramp. Project has full-fledged security personnel that are always on high-alert for any security breaches.



Our office Tower comprise of Office Suites, Trading Room and Conference Hall. Very few projects offer Parking lot for the parking of Vehicles. We are very conscious about the security and safety of customers' property, besides all the other facilities we have a Parking lot where you can park your vehicle.

OFFICE / IT TOWER & PARKING LOT



OFFICE SUITES & CONFERENCE HALL



Our Office Tower comprises of separate integrated Office Suites along with hygienic washrooms and handy kitchens. We are providing Trading room and Conference hall for all kind Business meetings The perfect design development that would meet our clients' expectations and aspirations, the one where the employees would feel comfortable.

FIRE FIGHTING SYSTEM



The warehouses are being built with class A roofs which makes every warehouse fire-proof. The class A roofing is more effective when exposed against fire and can last approximately 2 to 4 hours before igniting. This time is enough until the fire rescue operation. This system will protect the warehouse from any destruction caused by fire.

SECURITY ALARM SYSTEM

The project is being built with a state-of-the-art latest alarming system that has powerful proactive sensors which ensure high-standard security. Project is full-fledged secured & fenced round-the-clock with 24/7 CCTV surveillance.





STRUCTURAL COMPONENTS

WALLS:

The framework of the warehouse depends on the efficient stability of walls, thus walls are made up of cement blocks along with pillars filled with best quality concrete. We have focused on high quality and imported materials which guarantees heat resistance, sound insulation and earthquake resistance.

CONCRETE & EPOXY FLOORING:

Superior quality flooring improves the interior design and high standards of projects. We have used concrete for durability along with epoxy which is the best choice for concrete countertops, provide a clear finish and do not allow trapped moisture to escape

STEEL FREE:

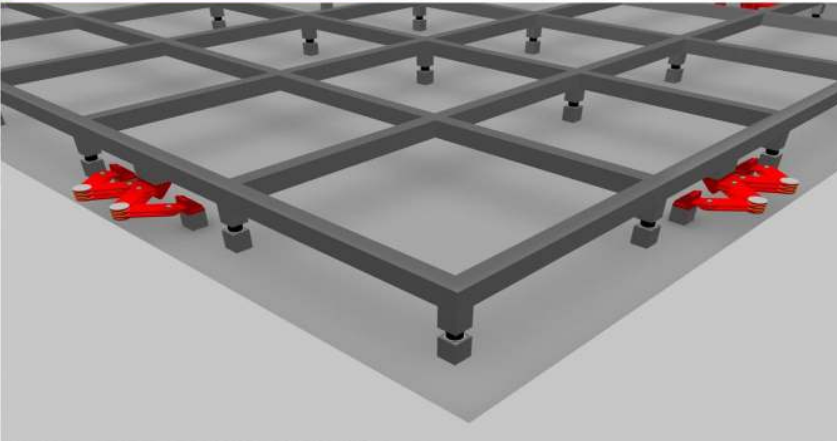
The main structure of a warehouse is typically made from steel. The steel is in the form of interlocking poles and steel rods, which are then welded together to create a tall yet durable frame for the cladding and roof to be affixed.

UPVC FLOORING:

Above the steel frame we have used UPVC sheets for roofing which are the best double wall corrugated and eco-friendly sheets. Not only this but it is highly non corrosive, noise insulated and built-in heat insulators.



EARTHQUAKE RESISTANCE



We have designed our project with the intention to resist and sustain from seismic waves and to prevent our warehouses from destructive earthquakes and natural calamities. We have inserted absorbing featured pads which include rubber and steel, during the foundation for the long-lasting protection of the warehouses.

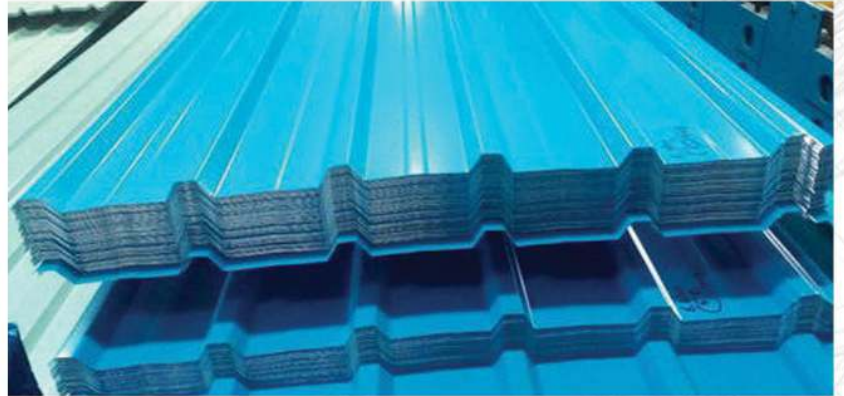
HEAT RESISTANCE

The Use of thermal mass during the construction of the warehouse prevents the warehouses from the getting too hot during the daytime this will protect your warehouse by being heating up with the material stored inside.

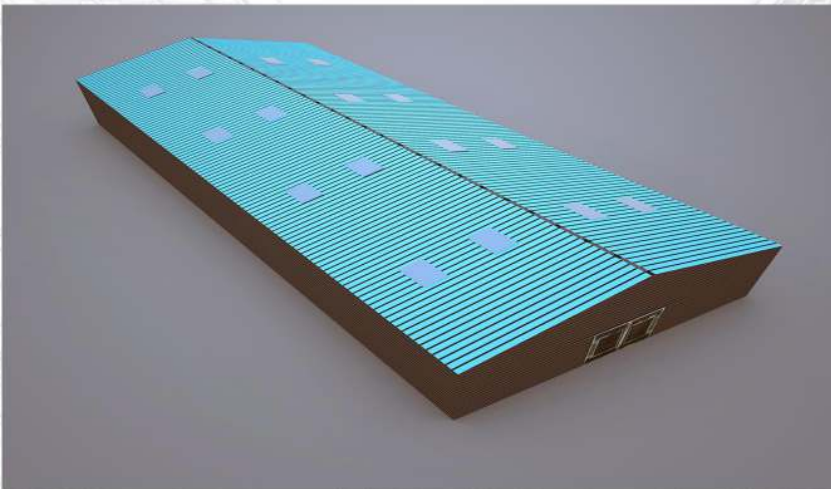


WINDPROOF SHEETS

The sheets of the sarehouses are wind-proof having an ability to resist wind speed of around 160 km/h. These imported UPVC sheets helps to preserve your expensive goods from any kind of damage.



SOUND INSULATION



The walls, as well as the roof of the warehouse, are being built with thick layers of materials with sound clips and resilient channels, to restrict the noise waves.

ELECTRIFICATION AND CABLING



Concealed copper wiring with adequate plugged points for entire warehouse, Generator Backup with Automated change over system, Master Control switches for internal as well as external lighting, Provision of the exhaust system and Earth leakage circuit breakers.

WATER SEWERAGE & DRAINAGE SYSTEM

Each warehouse has separate Water and Sewerage System. Premium quality CP and PVC fittings with branded accessories.



We understand the importance of the continuity of work operation for the efficient productivity and stability. Any sort of outage can cause significant issues and disturbs the continuation of work. We have installed additional power source considering the need of optimal uninterrupted 24/7 power backup in the absence of power for the continuity to function normally without interruption.

24/7 POWERBACKUP

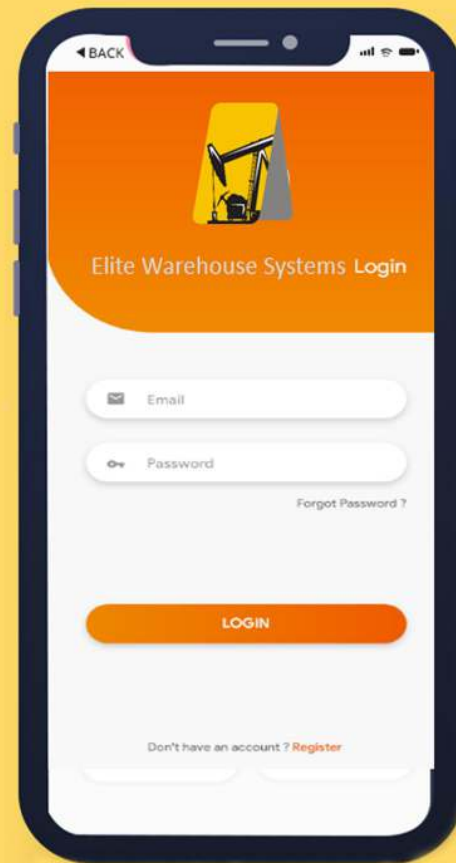


PAINTING



Internal Walls are coated with putty and premium emulsion paint finish. External Walls are coated with Premium emulsion with Acrylic finishes as per design.

ONE-TOUCH SMART APP



ONE TOUCH SMART APPLICATION

Businesses are using mobile apps to improve their work functionalities. Thus, increasing the level of approachability of their customers to them. Looking at the current scenario, noticeably we are introducing One Touch Smart App for our warehouse systems. This app will provide an Online Tracking facility, online consignment facility, in-house Camera Tracking along with Caution alerts. Unique IDs will be provided for each warehouse owners. This app will allow virtual access to the warehouse that brings interactive solutions in the palm.



OPPORTUNITY TO OWN WAREHOUSE

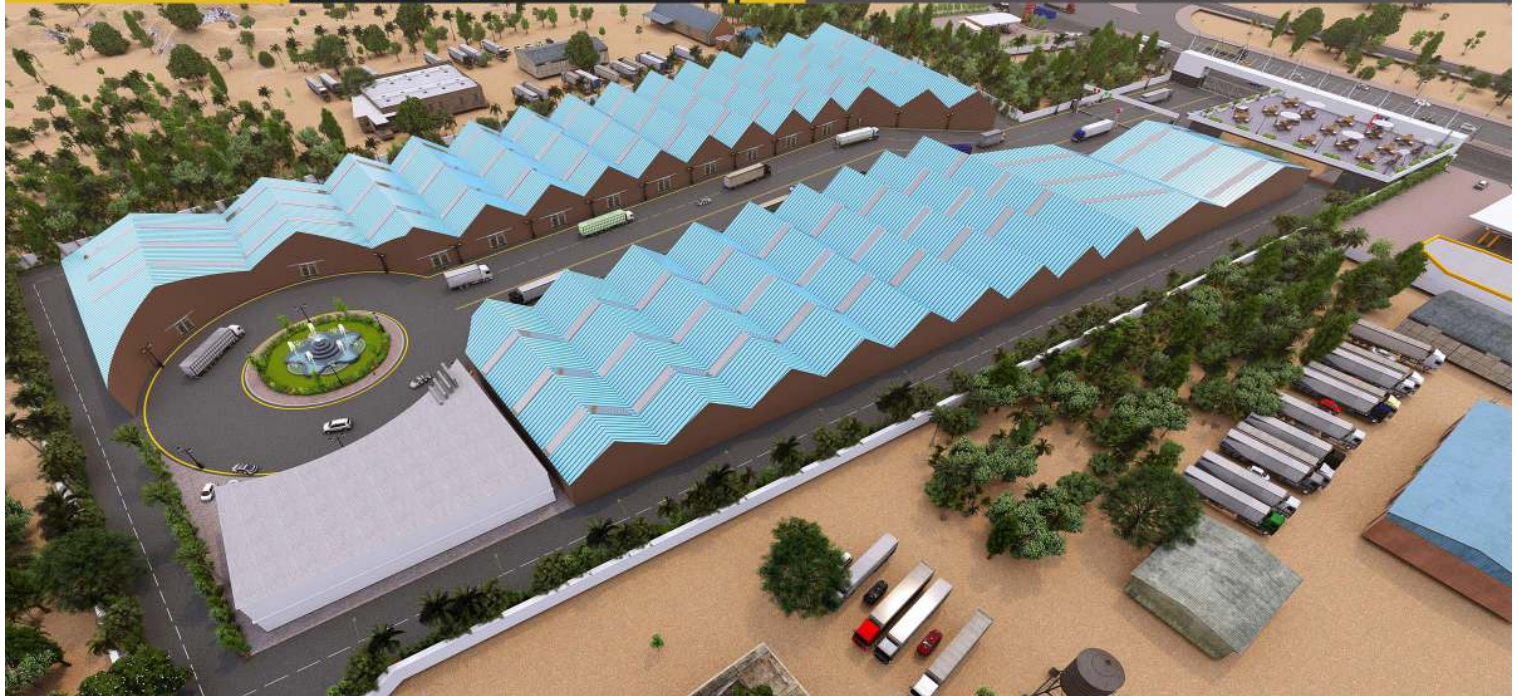
The Warehouse is designed with state-of-the-art amenities that has ultra-luxurious facilities. The automated hydraulic gate and latest technological security surveillance and fire extinguishing system with a complete featured mobile application that provides virtual accessibility and e-commerce functionality makes the warehouse innovative.

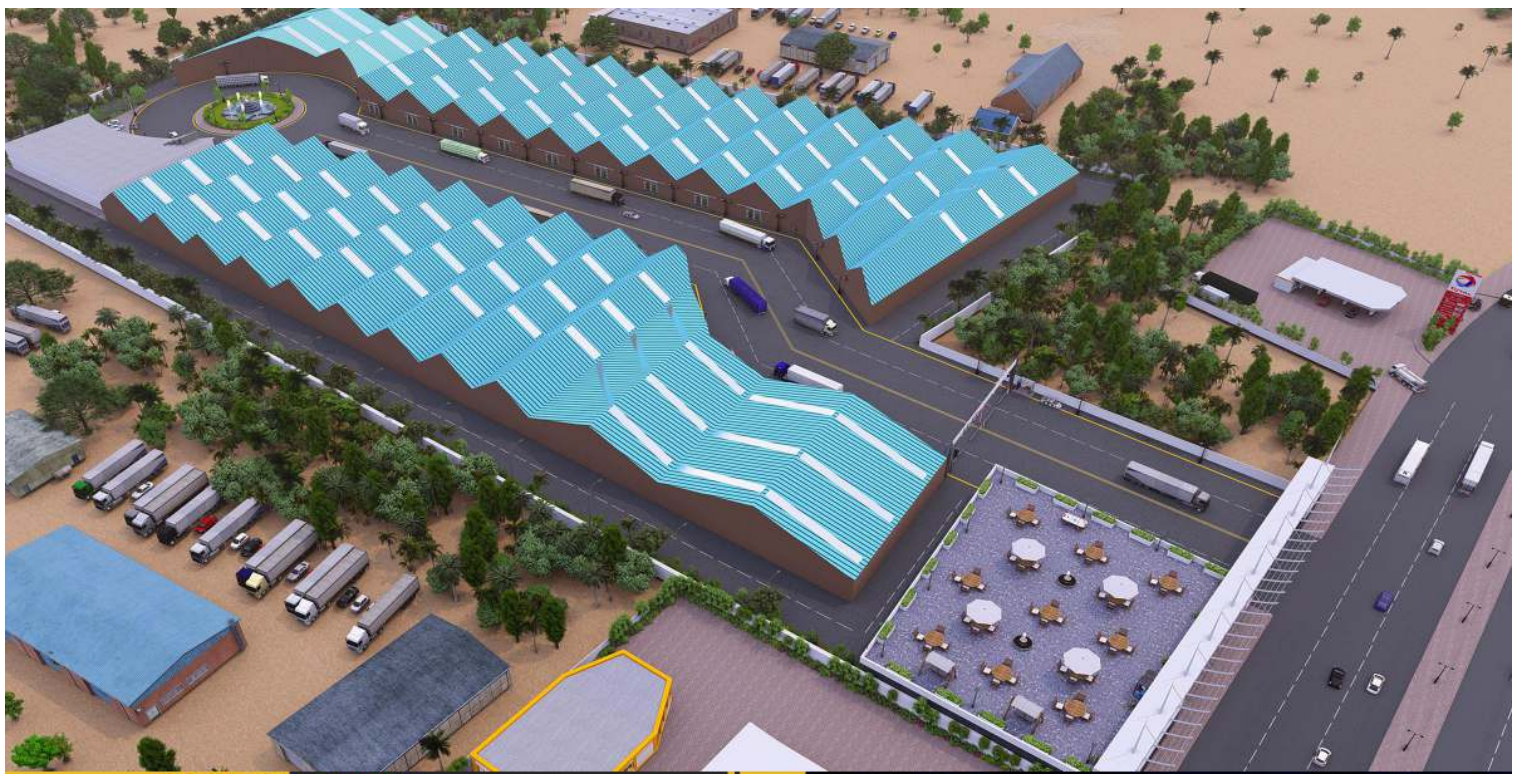
This project coined the supreme opportunity for the industrial sector to have full-fledged ownership rights instead of leasing right with restrictions. This facility for the very first time in Pakistan allows full operational control of the Warehouse with up to 99 years old lease on survey number land. The Warehouse can be a long-term investment for commercial realtors that pays back a vital monetary benefit.





3D AERIAL VIEW





PROJECT 3D VIEW






MAQ BUILDERS

& DEVELOPERS

Plot No 4, Sumaya Corner, Shaheed-e-Millat Road
CP & Berar Society CP & Berar CHS,
Karachi City, Sindh
Ph: 92-21-34916668-9

 [maqbuilderspk](#)